

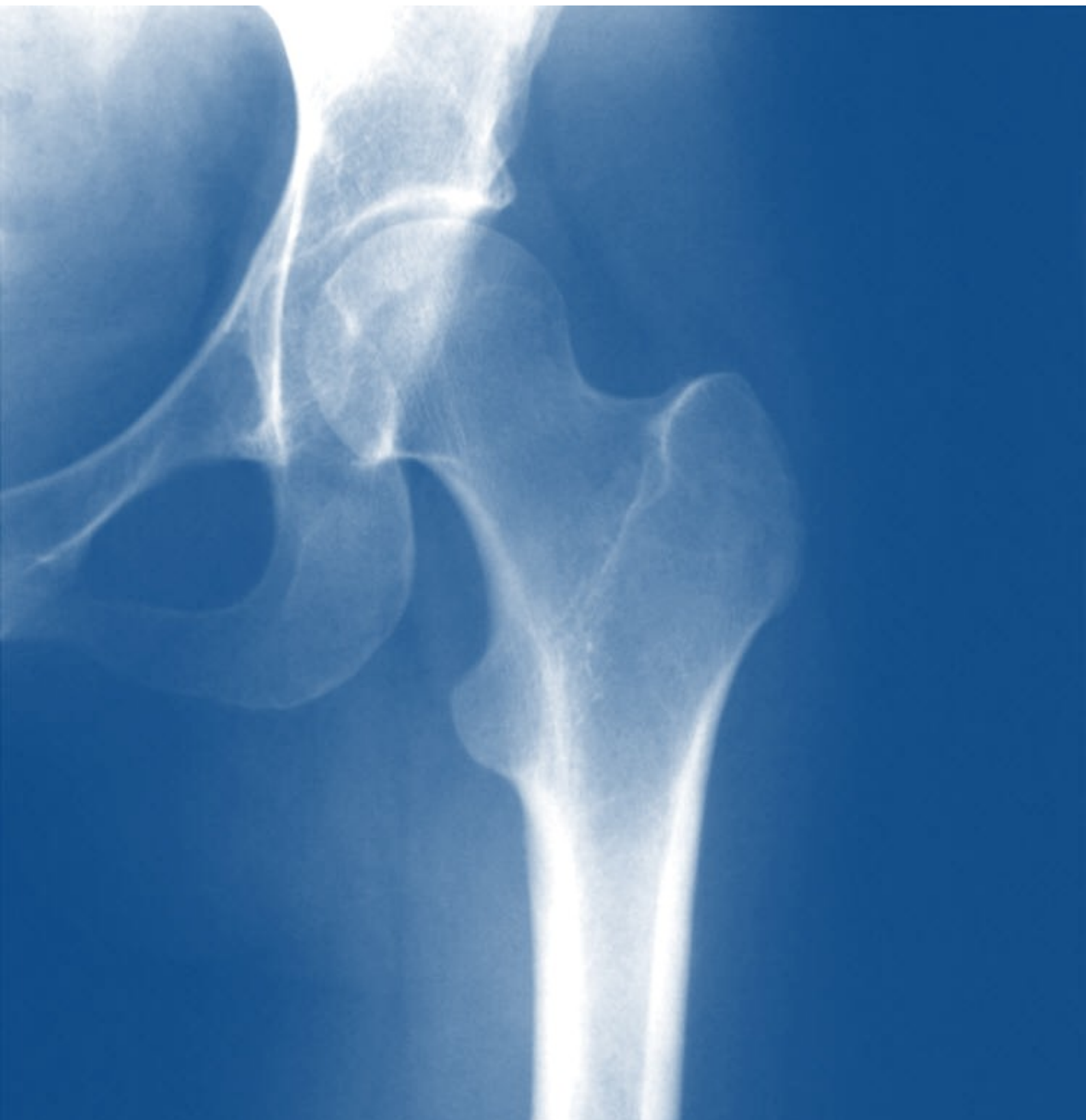
# OSTEOPOROSIS

& OTHER METABOLIC BONE DISEASES

*A training course organised by the  
Bone Research Society*

26-28 March 2012  
St Catherine's College, Oxford, UK

**Preliminary Programme**  
& Registration Documents



Organised by the  
Bone Research  
Society



Endorsed by:



orthopaedic  
research UK



Paget's  
Association



Supported by:



National  
Osteoporosis  
Society



# OSTEOPOROSIS

## & OTHER METABOLIC BONE DISEASES

*A course for specialist trainees*

### PROGRAMME CHAIRS:

Professor Jon Tobias (*Bristol*)

Professor Tash Masud (*Nottingham*)

### AIMS AND OBJECTIVES

This three-day residential training course aims to provide trainees in medical specialties such as rheumatology, endocrinology, care of the elderly, respiratory medicine, gastroenterology, orthopaedics and clinical chemistry with the knowledge and understanding to manage patients with osteoporosis and other metabolic bone diseases. The course is intended to focus on practical issues relating to patient management and is strongly recommended for any trainee who foresees that patients with these disorders will form a significant part of their workload in future. A stimulating interactive format will be employed combining lectures, panel discussions, debates and workshops. Specialist nurses in osteoporosis and falls will also find this course valuable, as well as any newly qualified consultants or others wishing to update their knowledge in this field.

The course is organised by the Bone Research Society with the support of an Unrestricted Educational Grant from Amgen.

Please see updates online at [www.brsoc.org.uk](http://www.brsoc.org.uk)

### PROGRAMME

(see website for full details and times)

#### MONDAY 26 MARCH - METABOLIC BONE DISEASE

##### Basic bone biology

*Jon Tobias (Bristol)*

##### Management of hypercalcaemia and hyperparathyroidism

*David Hosking (Nottingham)*

##### Paget's disease of the bone - what happens when osteoclasts get out of control?

*Peter Selby (Manchester)*

##### Debate: Who should we treat with Paget's disease? based on exploration of different case scenarios

*Peter Selby (Manchester, David Hosking (Nottingham), Tash Masud (Nottingham)*

##### Other metabolic bone diseases, eg hypophosphataemic rickets, hypophosphatasia, fibrous dysplasia, oncogenic osteomalacia

*Kim Brixen (Odense)*

##### Bone radiology

*David Wilson (Oxford)*

##### Guest Speaker: Early life influence on metabolic bone

*Cyrus Cooper (Oxford/Southampton)*

DINNER (St Catherine's College)

#### TUESDAY 27 MARCH - OSTEOPOROSIS

##### Epidemiology of osteoporosis

*Kassim Javaid (Oxford)*

##### Vertebral fractures

*Jon Tobias (Bristol)*

##### Update on osteoporosis therapy

*Tash Masud (Nottingham)*

##### Safety issues with bisphosphonates

*Bo Abrahamsen (Copenhagen)*

##### Practical issues in treating osteoporosis- includes compliance, monitoring, drug holidays, treatment failure

*Richard Keen (Stanmore)*

##### Uses and abuses of Fracture Prediction Tools

*Richard Keen (Stanmore)*

##### Developing primary and secondary care services in osteoporosis

*Alastair McLellan (Glasgow)*

##### Secondary osteoporosis

*Kim Brixen (Odense)*

##### Fall prevention strategies

*Tash Masud (Nottingham)*

##### How to assess and manage a faller in clinic?

*Adam Darowski (Oxford)*

##### Workshops on clinical issues in management of osteoporosis to include:

##### Renal osteodystrophy

*David Hosking (Nottingham)*

##### Pre-menopausal osteoporosis

*Peter Selby (Manchester)*

##### Male osteoporosis

*Richard Keen (Stanmore)*

RECEPTION and COURSE DINNER (Wadham College)

#### WEDNESDAY 28 MARCH - MISCELLANEOUS

##### Osteomalacia

*Kassim Javaid (Oxford)*

##### THE BIG DEBATE: "The benefits of calcium and vitamin D are overstated and they may be harmful"

*For the motion: Alastair McLellan (Glasgow)*

*Against the motion: Bo Abrahamsen (Copenhagen)*

##### Practical Workshops:

##### Interpreting and reporting DEXA

*Richard Keen (Stanmore)*

##### Older patients with hip fracture

*Adam Darowski (Oxford)*

##### Managing a patient with painful vertebral fractures

*Jon Tobias (Bristol)*

## GENERAL INFORMATION

### Venue

The course will be based at St Catherine's College, Oxford. Lectures and workshops will take place in the adjacent Manor Road Building, a new facility designed by Sir Norman Foster, which includes a comfortable tiered lecture theatre with individual writing tables, and light and roomy breakout rooms for workshop sessions. The venue has been deliberately chosen to enable participants to get the most out of their attendance, including networking with speakers and other participants.

The College is within easy reach of rail, coach and bus stations. Further information can be found on the course web pages at [www.brsoc.org.uk](http://www.brsoc.org.uk) and at [www.catzconferences.co.uk](http://www.catzconferences.co.uk).

### Registration and Accommodation

The number of places is limited and will be offered on a first-come, first-served basis. To register please complete the attached registration form and return it to the Organisers by 2 March 2012. Payment must be received with the registration form and prior to the commencement of the course. The residential delegate registration fees include two nights' accommodation at St Catherine's College (bed and breakfast basis; modern and bright en-suite student rooms) on Monday 26 and Tuesday 27 March, admission to all the scientific sessions, a delegate pack, lunch and refreshments on all three days of the meeting, dinner on 26 March and the reception and course dinner on 27 March.

### Social Events

It is recommended that all participants attend the social events whether or not they are staying on campus at St Catherine's College. There will be opportunities to mix with other participants and speakers and this sharing of information and ideas can really enhance your learning and give you the opportunity to set up new collaborations.

Monday 26 March, 19:00-20:00: College Dinner at St Catherine's College, followed by free time/drinks in the bar

Tuesday 27 March, 19:15-21:30: Reception and Course Dinner at Wadham College, followed by visit to some of Oxford's most interesting pubs

---

## REGISTRATION FORM

Please register by 2 March 2012. Payment must be received with the registration form and prior to commencement of the course. You can also book online at [www.brsoc.org.uk](http://www.brsoc.org.uk).

### Delegate Details

Title: \_\_\_\_\_ First Name: \_\_\_\_\_ Surname: \_\_\_\_\_

Specialty: \_\_\_\_\_

Correspondence address: \_\_\_\_\_

Postcode: \_\_\_\_\_ Country: \_\_\_\_\_

Tel (Inc. Int. code): \_\_\_\_\_ Fax (Inc. Int. code): \_\_\_\_\_

Email (essential): \_\_\_\_\_

### Registration Fees

In order to enhance the Oxford experience and to maximise networking opportunities delegates are advised to select the residential option and to attend the evening dinners as well as the daytime sessions.

#### RESIDENTIAL DELEGATES

The residential delegate fee includes:

- Two nights' accommodation at St Catherine's College on Monday 26 and Tuesday 27 March
- Admission to the scientific sessions
- Delegate pack,
- Lunch and tea/coffee breaks on all three days of the course
- College dinner (St Catherine's College) on the 26 March
- Reception and Course Dinner (Wadham College) on the 27 March

**Residential delegate Fee: £450.00** ☐

#### NON-RESIDENTIAL DELEGATES

The non-residential delegate fee includes:

- Admission to all scientific sessions
- Delegate pack
- Lunch and tea/coffee breaks on all three days of the course

**Non-residential delegate fee: £350** ☐

**College Dinner - 26 March: £18.00 (included in the residential rate)** ☐

**Reception and Course Dinner - 27 March: £35.00 (included in the residential rate)** ☐

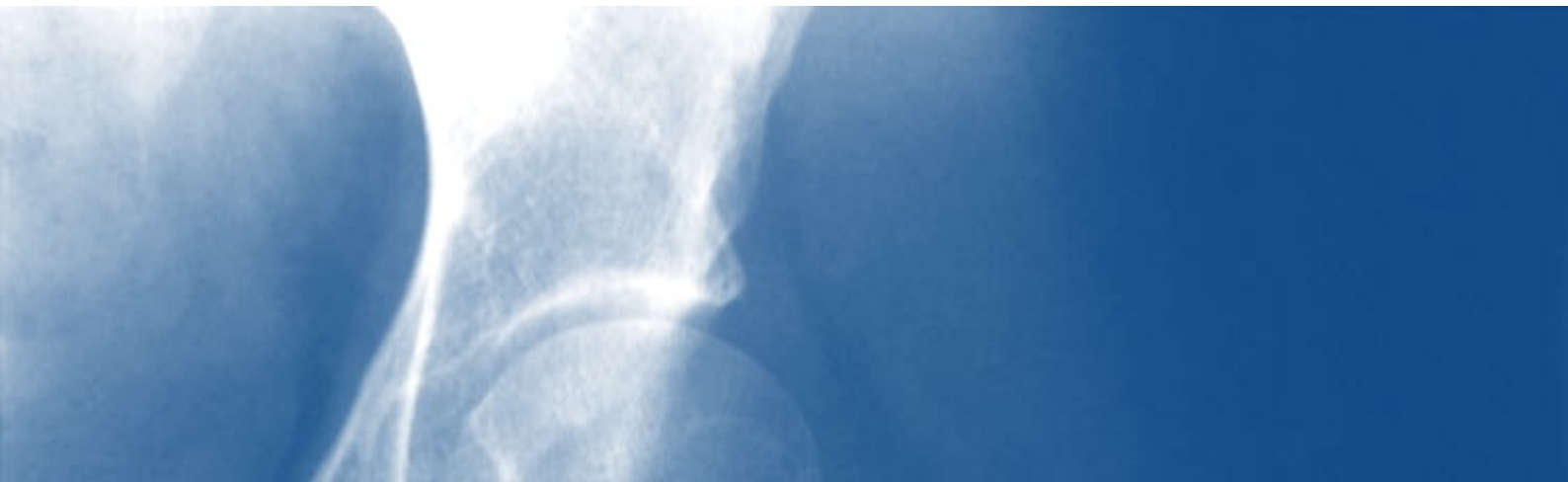
# OSTEOPOROSIS

& OTHER METABOLIC BONE DISEASES

*A training course organised by the  
Bone Research Society*

26-28 March 2012  
St Catherine's College, Oxford, UK

## Preliminary Programme & Registration Documents



Dietary/Special Requirements Please indicate below any dietary (eg vegetarian) or other special (eg disabled access) requirements you may have:

---

### PAYMENT DETAILS

Please indicate your payment preference:

- ☐ Cheque (*Please make cheques payable to "BRS Conference Account"*)  
☐ Visa  
☐ Mastercard  
☐ Switch/ Maestro

Name and address of cardholder:

---

---

---

Credit card number:

Expiry date: \_\_\_\_\_ Issue No: \_\_\_\_\_ (*Switch only*) Start date: \_\_\_\_\_

Security number:  (*The last three digits printed on the reverse of the card*)

Signature: \_\_\_\_\_ Date: \_\_\_\_\_

***Please return this form along with payment to:***

Janet Crompton, Course Organiser, The Old White Hart, North Nibley, Dursley, Glos GL11 6DS, UK  
Email [janet@janet-crompton.com](mailto:janet@janet-crompton.com)  
Fax +44 (0)1453 548919  
Tel +44 (0)1453 549929

You can also book online at [www.brsoc.org.uk](http://www.brsoc.org.uk)