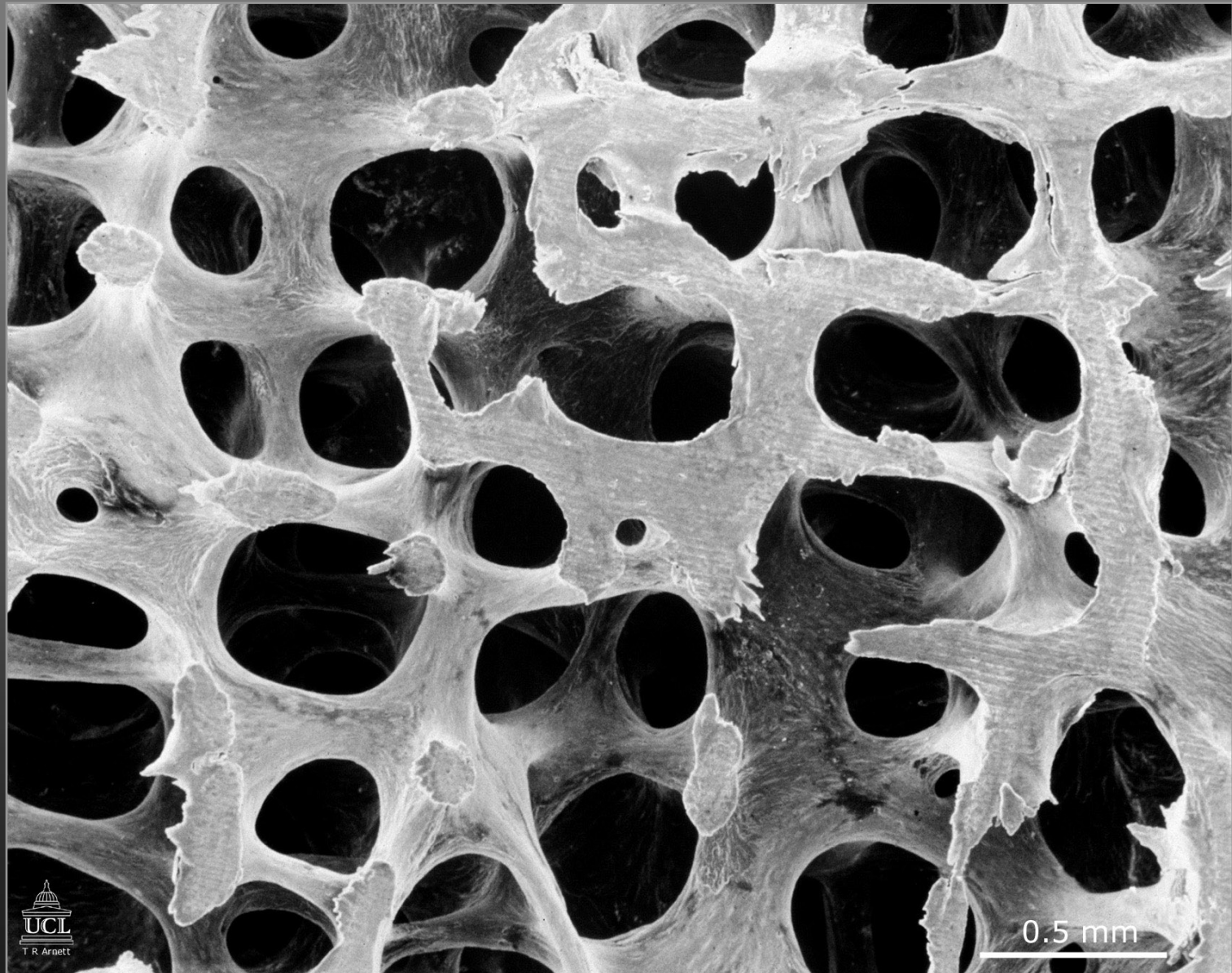
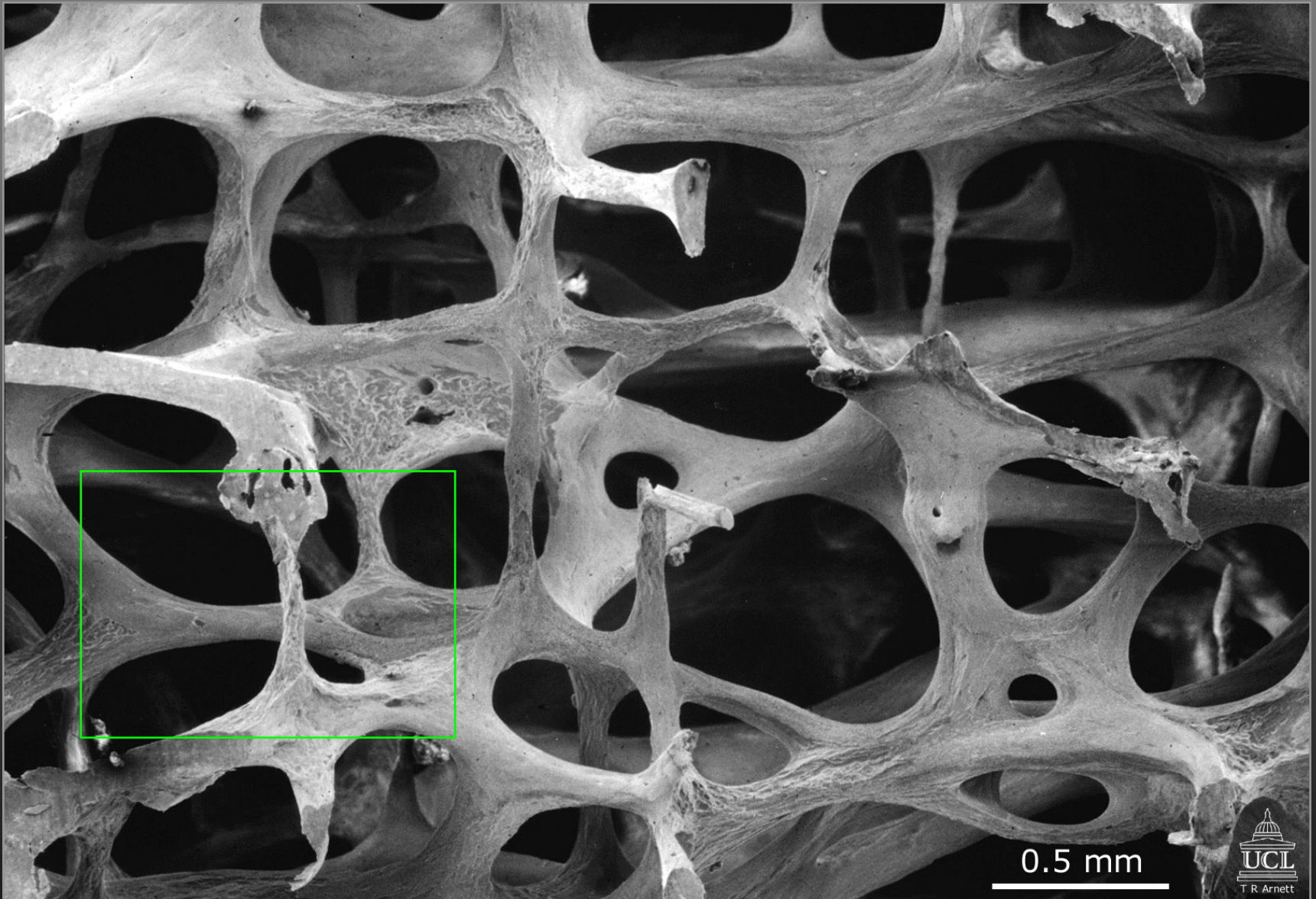


Low-power scanning electron microscope image of normal bone architecture in the 3<sup>rd</sup> lumbar vertebra of a 30 year old woman  
*marrow and other cells have been removed to reveal thick, interconnected plates of bone*

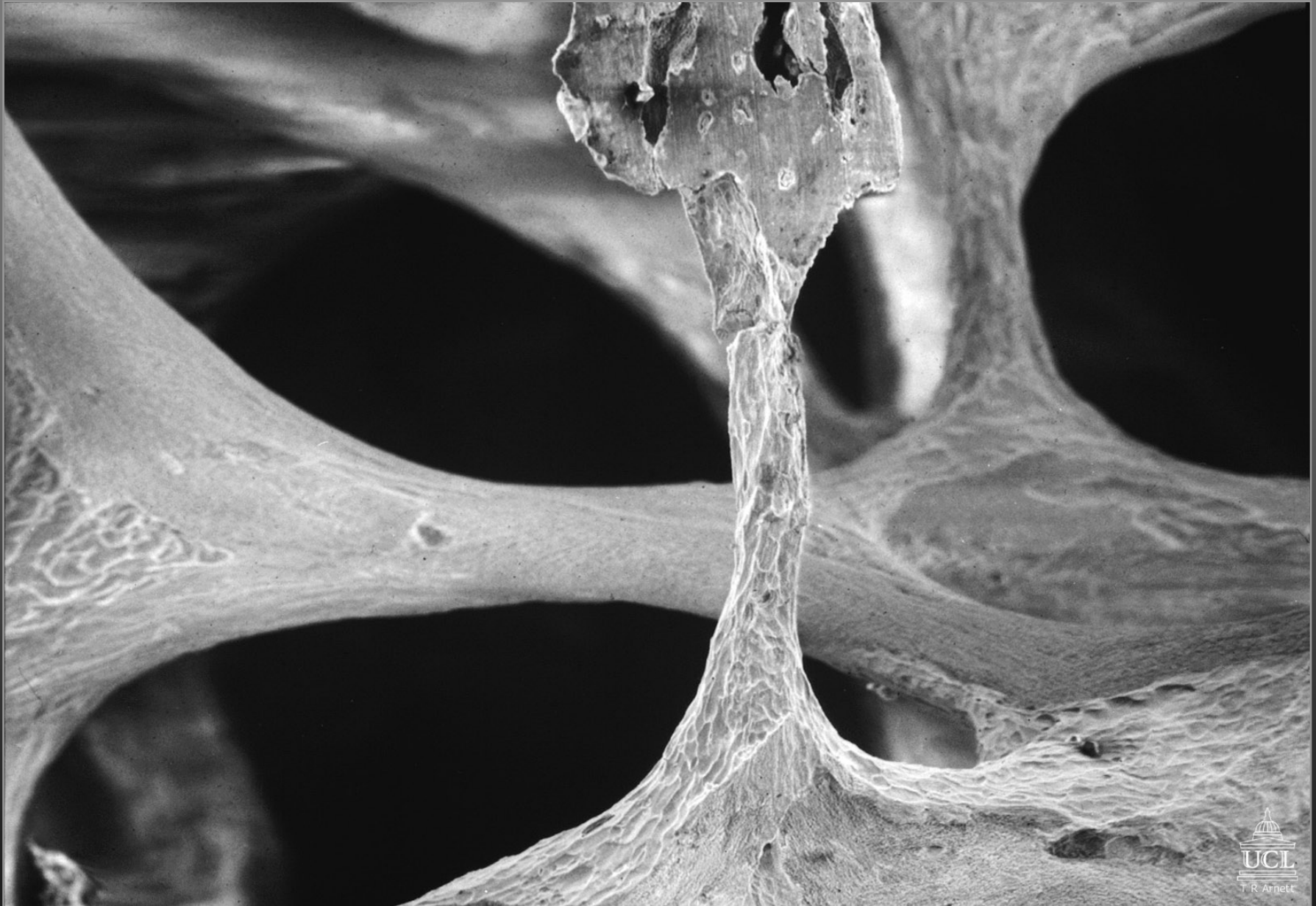


Low-power scanning electron microscope image of osteoporotic bone architecture in the 3<sup>rd</sup> lumbar vertebra of a 71 year old woman  
*marrow and other cells have been removed to reveal eroded, fragile rods of bone*





Detail of a trabecular bone element eroded by osteoclasts  
*note extensive pitting and fragility of the bone*



Detail of a trabecular bone element perforated by osteoclast action  
*note pitting of the bone 'stalagmite'*

